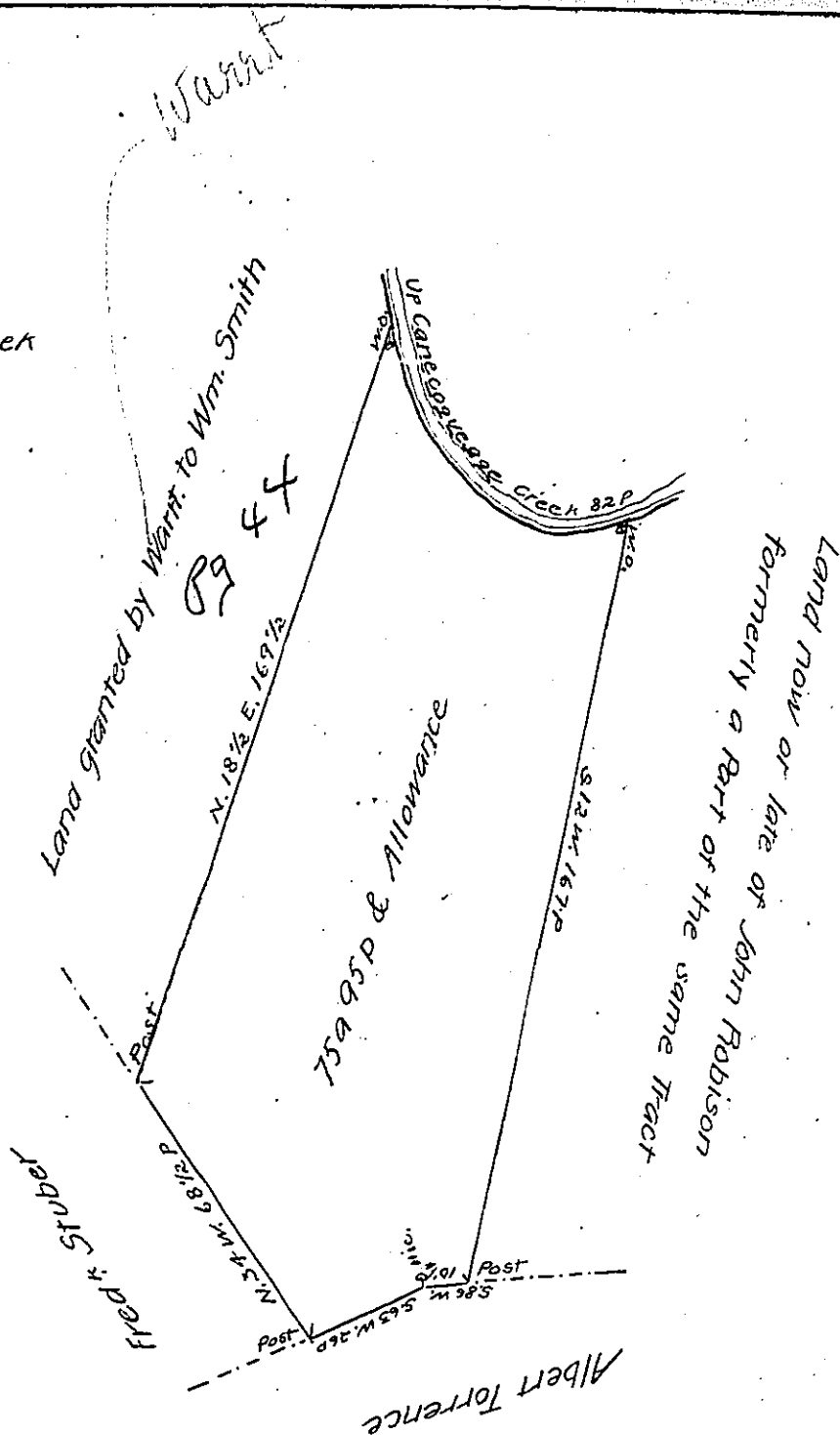


Courses on the Creek

S. 20° E. 33 P
S. 63 E. 31
N. 60 E. 12
82 P



A Draft of a Tract or Parcel of Land situate formerly in Letter-Kenny Township in the County of Cumberland, but now in Green-Township in the County of Franklin Containing Seventy five Acres and ninety five Perches and an Allowance proportional to Six pCent. for Roads &c., being Part of a Tract formerly surveyed in pursuance of a Warrant granted to William Smith bearing Date the 12th Day of December 1772 Survey'd March 15th 1782 in pursuance of a Warrant granted to William Smith bearing Date the 12th Day of August 1765, being in part of the same,

p. Mattw. Henderson D.S.

To Daniel Brodhead Esquire
Surveyor General of Pennsylvania

IN TESTIMONY that the above is a copy of the original remaining on file in the Department of Internal Affairs of Pennsylvania, made conformably to an Act of Assembly approved the 16th day of February 1833, I have hereunto set my hand and caused the Seal of said Department to be affixed at Harrisburg, this twenty-sixth day of January 1907

Isaac D. Brown
Secretary of Internal Affairs.